

AYAME 49,998 MT Product/Chemical Tanker **18**

[Contents](#)

[By Builder](#)

[By Ship Type](#)

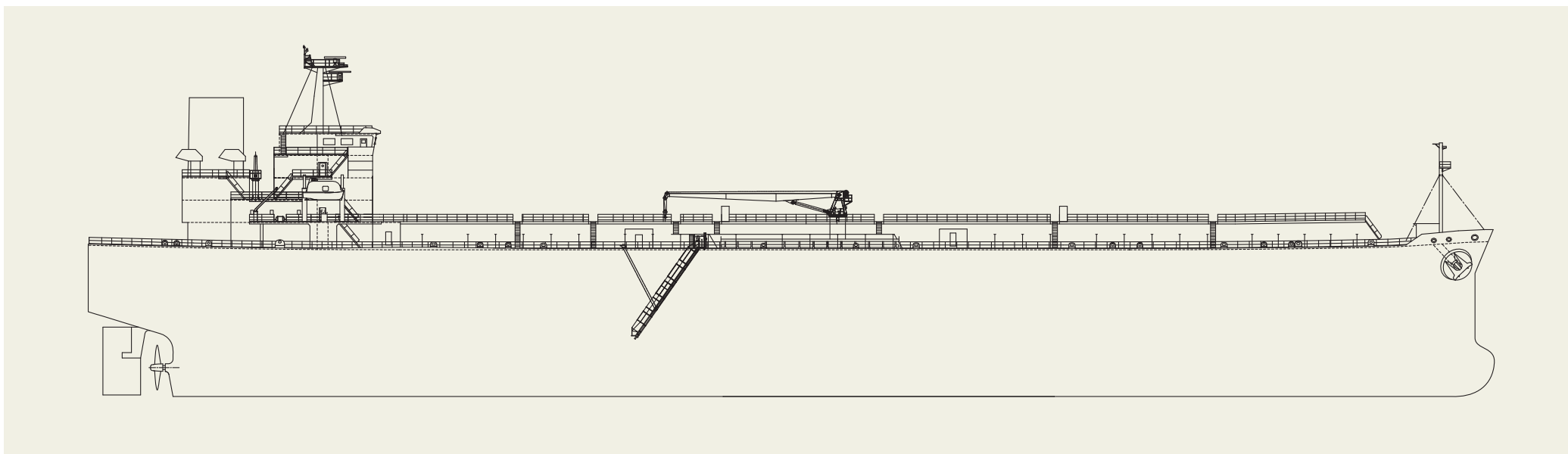


Features

1. The vessel is developed Medium Range Tanker called ONOMICHI MR MARK V. She is capable to carry chemical cargoes (IMO Type II & III) with 14 cargo oil tanks and individual cargo oil pumping system.
2. Main engine is low-revolution and low-consumption electrically controlled type engine, MAN B&W 6S50ME-C9.7-HPSCR.
3. Stern fin is equipped in front of propeller, which controls the flow and improves the inflow to the propeller. It decreases the resistance acting on the ship's hull and helps to reduce fuel consumption.

PRINCIPAL PARTICULARS

Length (o.a.)	182.50 m	NOR (kw x rpm).....	5,820 kW x 97 min ⁻¹
Length (b.p.).....	175.00 m	Speed (max. trial)	15.27 knots
Breadth (mld.).....	32.20 m	(service).....	13.7 knots
Depth (mld.).....	19.05 m	Complement.....	25
Draft (mld.).....	13.079 m	Classification	NK
Gross tonnage.....	29,395	Handling gear.....	
Deadweight.....	49,998 MT	1 set Electro-Hydraulic type Manifold Hose Handling Crane	
Main engine	MAN B&W 6S50ME-C9.7-HPSCR	Cargo pump.....	12 sets 600 m ³ /h FRAMO Cargo Oil Pump
MCR (kw x rpm)	7,600 kW x 106 min ⁻¹	Loading capacity (tank).....	55077.4 m ³
		Builder.....	Onomichi Dockyard Co., Ltd.



NORVIC SINGAPORE 39,738 MT Bulk Carrier 53

[Contents](#)

[By Builder](#)

[By Ship Type](#)

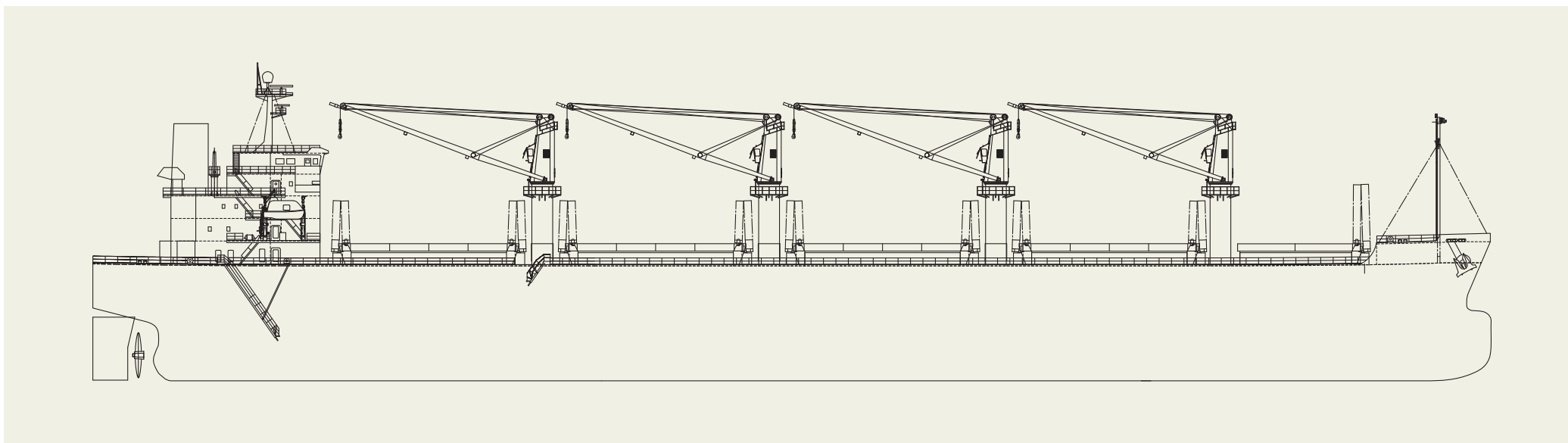


NORVIC SINGAPORE 39,738 MT Bulk Carrier **53**[Contents](#)[By Builder](#)[By Ship Type](#)**Features**

1. The cargo holds are semi-box shape, and it is capable to carry various cargoes with wide hatch cover.
2. The vessel has been developed as earth-friendly vessel. She features optimized hull shape, energy-saving device and low-revolution and low-consumption electrically controlled type engine, and these lead to comply EEDI phase 3 in advance.
3. The vessel has four (4) sets of 30 ton electro-hydraulic type deck crane.
4. Nitrogen oxides in exhaust gas reducing system is adopted to lessen the environmental burden.

PRINCIPAL PARTICULARS

Length (o.a.).....	199.99 m	Speed (max. trial).....	15.15 knots
Length (b.p.).....	174.00 m	(service).....	13.5 knots
Breadth (mld.).....	32.00 m	Complement.....	25
Depth (mld.).....	14.80 m	Classification.....	NK
Draft (mld.).....	10.20 m	Handling gear.....	4sets Electro-Hydraulic type Deck Crane
Gross tonnage.....	24,754	Cargo pump.....	Nil
Deadweight.....	39,738 MT	Loading capacity (tank).....	N/A
Main engine.....	MAN-B&W 6G45ME-C9.7-HPSCR	(grain).....	49,880.4 m ³
MCR (kw x rpm).....	5,280 kW x 92.4min ⁻¹	(bale).....	48,835.1 m ³
NOR (kw x rpm).....	4,490 kW x 87.5 min ⁻¹	Builder.....	Onomichi Dockyard Co., Ltd.



MAPUTI 17,667 MT Tween Deck Cargo Vessel 70

[Contents](#)

[By Builder](#)

[By Ship Type](#)



Features

1. The vessel has two (2) tween deck cargo holds for carrying various cargoes, and equipped with one (1) set 100 tons capacity twin type electro-hydraulic type deck crane.
2. Cargo hold is designed semi-box shaped type and has 25,400 cubic meter capacity and with 30m length long type wide hatch.
3. She has wide breadth and shallow draft, so it is not only for safe cargo transportation, but also for improvement for crew living environment.
4. In order to be complied with EEDI phase-3 environmental regulation, the ship archives high propulsion performance by combination of optimized hull shape and propeller.

PRINCIPAL PARTICULARS

Length (o.a.)	129.66 m	Complement.....	20 persons
Length (b.p.).....	122.60 m	Classification	NK
Breadth (mld.).....	23.60 m	Handling gear.....	1 set Electro-Hydraulic Type Deck Crane (Twin type)
Depth (mld.).....	15.85 m	Cargo pump.....	Nil
Draft (mld.).....	9.80 m	Loading capacity (grain).....	25383.3 m ³
Gross tonnage.....	13,263	(bale).....	23842.4 m ³
Deadweight.....	17,667 MT	(container)	N/A
Main engine	J-ENG 6UEC35LSE-B2	(passenger).....	N/A
MCR (kw x rpm)	3,090 kW x 118 min ⁻¹	(car/vehicle).....	N/A
NOR (kw x rpm).....	2,625 kW x 111.8min ⁻¹	(others)	N/A
Speed (max. trial).....	14.8 knots	Builder.....	Onomichi Dockyard Co., Ltd.
(service).....	12.5 knots		

